



Water by Karl Fischer

Water by Karl Fischer is a classical titration method in chemical analysis. It uses coulometric titration or volumetric titration to determine trace water in samples. It was invented by German chemist Karl Fisher in 1935. Today, the titration is done with Karl Fischer automatic titrator. Weshine® The developed Water by Karl Fischer (KF titrator) introduces the reliable

performance, simple operation and space saving design of the compact KF coulometer. The accurate result is 1 ppm to 5% water. Each user can have up to 4 shortcuts + 5 analysis methods. With the Weshine® Water by Karl Fischer, the operator can conduct moisture measurement by pressing the button! Contact us for more details on winding resistance testing of Weshine Water by Karl Fischer.



Water by Karl Fischer

Water by Karl Fischer, also known as KF titrator, is used to determine the amount of water in the sample. Since the presence of water affects many characteristics of products, including reactivity, stability and quality, KF titration is very important in many industries and is used in many industries. The food, petroleum, pharmaceutical and semiconductor industries use **Water by Karl Fischer** to maintain product quality. There are two kinds of **Water by Karl Fischer** methods: volumetric method, which uses the amount of reagent to determine the amount of water; The coulometric method of electrolytic reaction uses electricity to tell us the amount of water in the

Weshine Electric Manufacturing Co., Ltd.

Address: Diangu Technology Center, No. 3088, Lekai North Street

Tel: +86-312-3188565

E-mail: sale09@weshineelectric.com

Phone: +86-18731260588

sample. The volumetric method is suitable for the measurement of water from 1 to 100 mg, while the coulometric method is suitable for very small amounts of water from 10 micrograms to 10 mg. When selecting a suitable **Water by Karl Fischer**, several factors should be considered, including the size of the sample required, whether volumetric titration or coulometric titration is required, the time required for titration, the degree of automation in the process, and the amount of labor required.

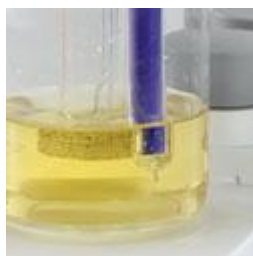
Weshine® Water by Karl Fischer Parameter (Specification)

PRODUCT INFORMATION			
Product Name	Water by Karl Fischer		
Test Range	1 μg ~ 200 mg	Power	<40W
Electrolytic Current	0~400 mA automatic control		
Titration method	Coulometric titration (Coulomb analysis)		
Accuracy	10 μg~1000 μg ±3 μg		
	More than 1 mg but not greater than 0.3%		
Standards	GB/T11133,ASTM D1744,DIN 51777	Certificates	CE; EMC; LVD; ISO; IEC;
Dimensions	380 x 310 x 180 mm	Model Number	VS-9805



One Click User Interface

With the intuitive One Click touchscreen interface, customize home screens to run your workflows quickly and easily with a single tap on the screen.



Karl Fischer Titration

Excellence line titrators fully support both volumetric and Water by Karl Fischers to accurately measure water in liquid or solid samples from 0.001% to 100%.



Plug & Play Accessories

Sensors and burettes are automatically recognized when connected. Avoid errors by eliminating extra data entry steps and reduce instrument setup time.

Weshine Electric Manufacturing Co., Ltd.

Address:Diangu Technology Center, No. 3088, Lekai North Street

Tel:+86-312-3188565

Phone:+86-18731260588

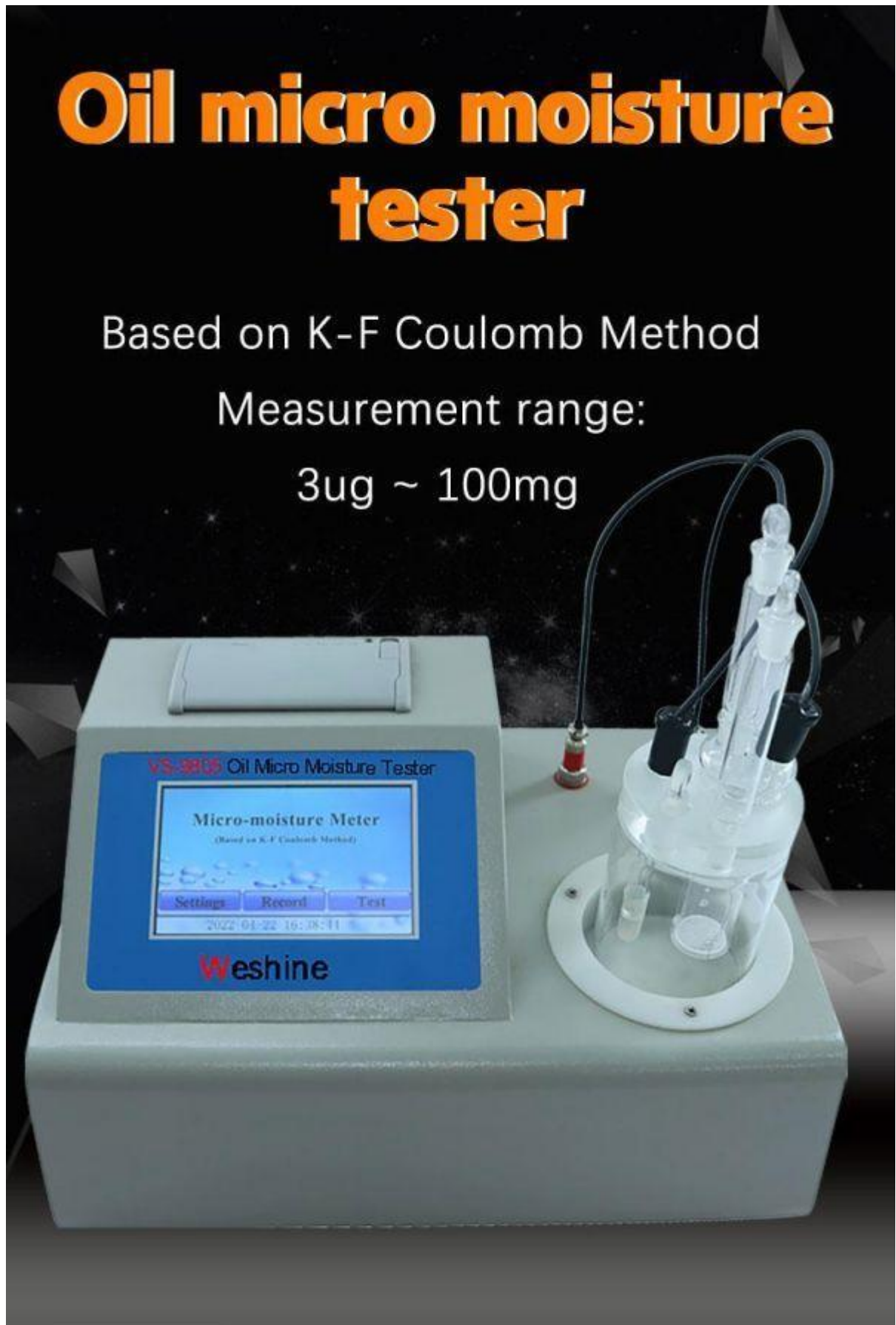
E-mail:sale09@weshinelectric.com

Oil micro moisture tester

Based on K-F Coulomb Method

Measurement range:

3ug ~ 100mg

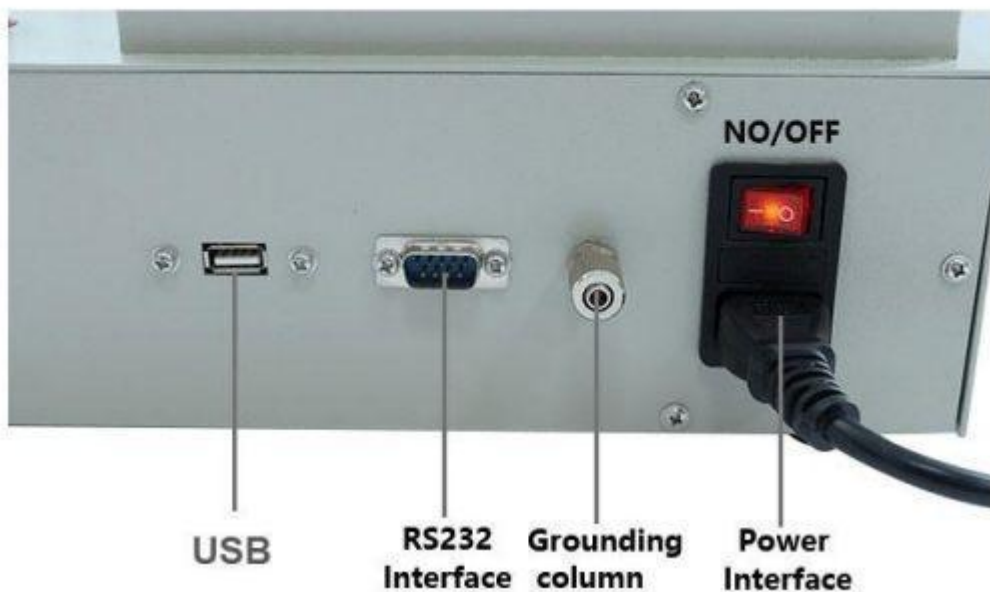
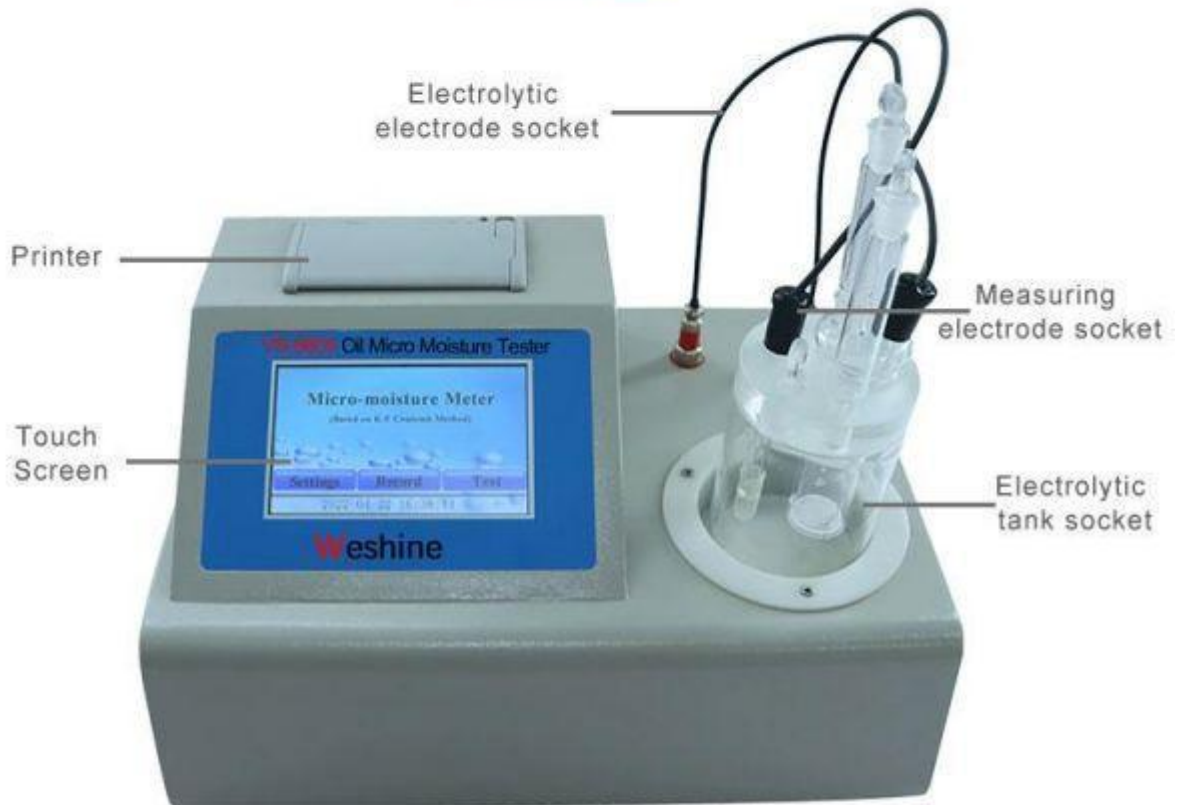


FEATURES

- Four calculation formulas are available.
- Up to 400mA electrolytic current, automatic control.
- Color touch screen, easy to operate.



PRODUCT INTRODUCTION



Product size



SUPPORTING ACCESSARIES



1	Power cord	1 pc
2	Insurance tube	2 pcs
3	Electrolytic cell bottle	1 pc
4	Electrolytic electrode	1 pc
5	Measuring electrode	1 pc
6	Injection seal plug	1 pc
7	Tighten the injection stud	1 pc
8	Silicone pad	10 pcs
9	Anode chamber drying tube (105)	1 pc
10	Drying tube of cathode chamber (85)	1 pc
11	Dry tube frosted plug (10#)	2 pcs
12	Anode chamber frosted plug (12#)	1 pc
13	Blue silica gel desiccant	50g
14	0.5 μ L microinjector	1 pc
15	50 μ L microinjector	1 pc

LIVE SHOW



Selections

Weshine has 8 years experience specifically for deal with complete range of Electrical Equipment. At present, Weshine has invented various **Water by Karl Fischer** as shown as form:

ORDERING INFORMATION FOR Water by Karl Fischer					
Cat. No.	Test Current (mA)	Test Range	Accuracy	Dimensons (mm)	Weight (kg)
VS-9805	0 to 400	3 µg to 100 mg	±3 µg≤1 mg,	320 x 235 x 150	4.5
VS-9805A	0 to 400	1 µg to 200 mg	<3%>1 mg	380 x 310 x 180	4

Based on Supply Chain issues: Please contact your preferred Authorized Weshine Distributor for current pricing and lead times.

Quality Certificates

We always believe that all the success of our company is directly related to the quality of the products we provide. **Karl Fischer Instrument** meet the highest quality requirements specified in ISO9001, ISO14000:14001 guidelines and our strict quality control system.



Shipment

Weshine Electric Manufacturing Co., Ltd.
 Address: Diangu Technology Center, No. 3088, Lekai North Street
 Tel: +86-312-3188565 Phone: +86-18731260588
 E-mail: sale09@weshineelectric.com



For further information on Weshine's Service Solutions, contact our 24/7 online sales representative to get quotes from Weshine.

Contact us

FEEL FREE TO MAKE A PHONE CALL:400 996 1868	OR E-MAIL TO: info@weishengelectric.com
SALES OFFICE Weshine Limited 602, Building 3, Diangu Technology Center, No. 3088, Lekai North Street W/app: +86 1873 1260 588 E. info@weishengelectric.com sale01@weishengelectric.com	CONTACT OFFICE T. 0312 3188565 E. bdweisheng@weishengelectric.com AFTER-SALES SERVICE T. +86 157 1252 6062